



Setting up the Citrix ICA Web Client On Your Home or Office Computer

There are two procedures you will need to complete to access applications from Laughlin Memorial Hospital:

1. Open your web browser and go to <http://apps.lmhcare.org>
2. Install the Citrix ICA Web Client on your computer.

Finally, after you have completed the procedures to set up Citrix, you will need to know how to log in and out of the LMH Citrix Website and run applications. This document will walk you through the entire process of installing the agent and accessing published applications.

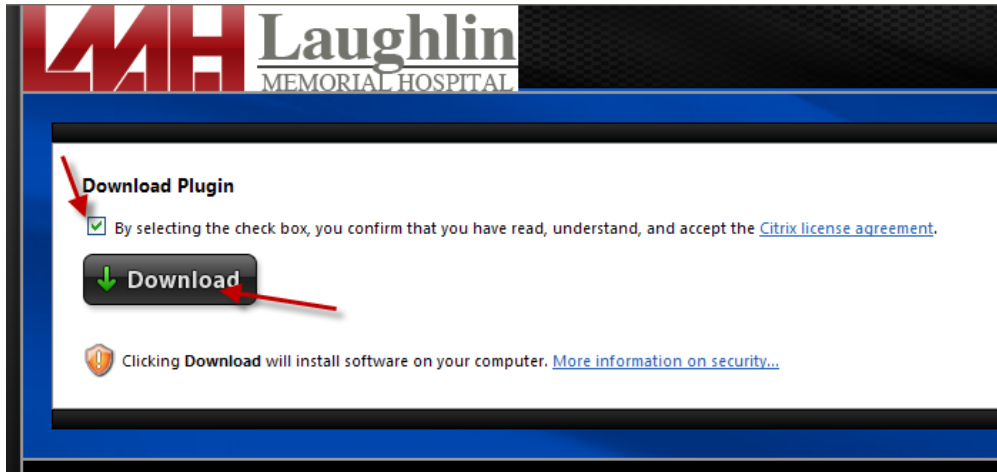
Download and install the Citrix ICA Web Client:

In order to download the ICA Web Client on your machine, you will need to establish a connection to the internet through your Internet service provider. A broadband internet connection is recommended for optimal results. From within your preferred web browser, complete the following steps: From your web browser, type the following URL to download the needed client. <http://apps.lmhcare.org>

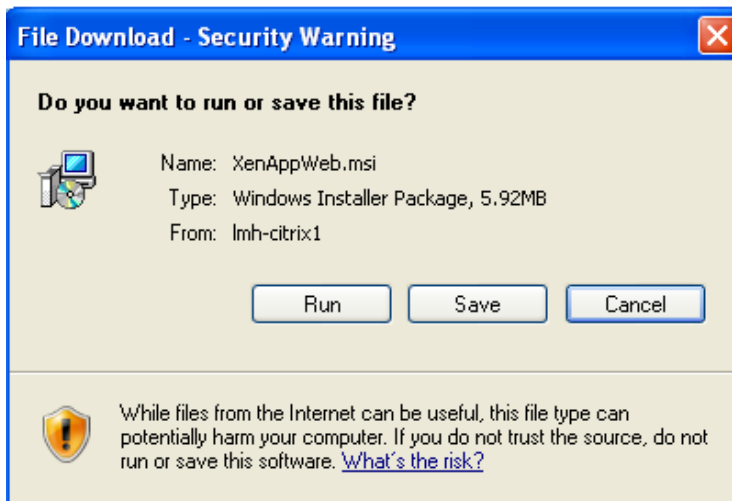


You will need to use your supplied NETWORK credentials to access the portal.

If the computer you are using does not have the Citrix Plugin, you will be prompted with the following screen. You will need to accept the license agreement first, and then click on the DOWNLOAD button.



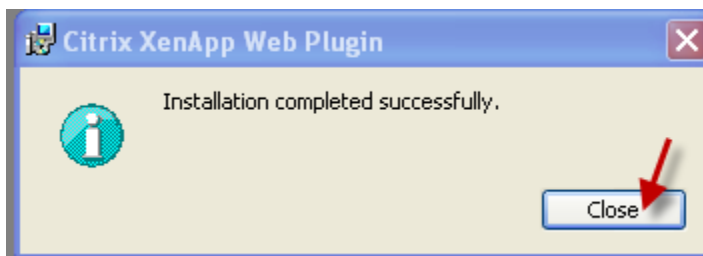
You will be prompted to either run the install file or save it to your local machine to run at a later time. Choose Run at this time.



Once the agent is ready to install, you will be prompted once again to install. Choose Run.



Once the agent is successfully installed, you will see the following prompt. You may be prompted to reboot your machine after the install.

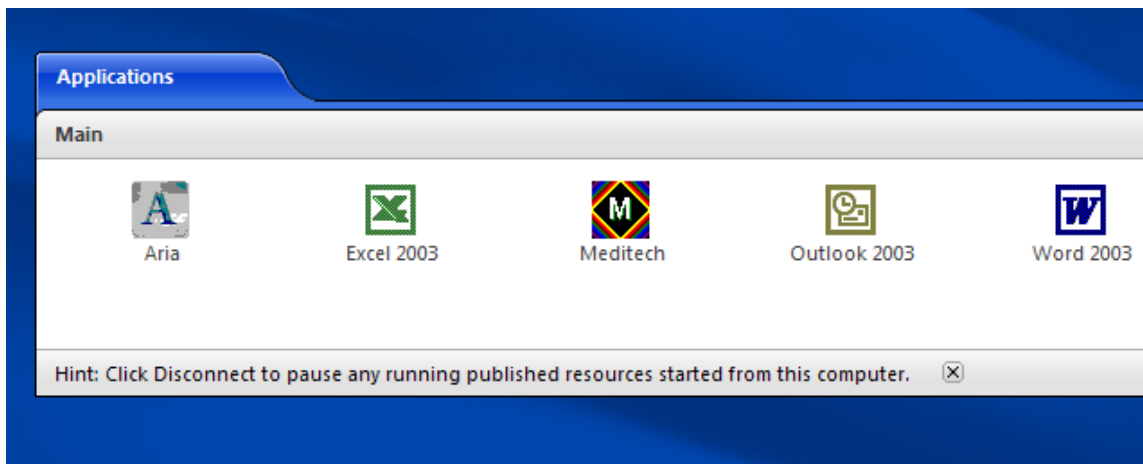


Accessing applications:

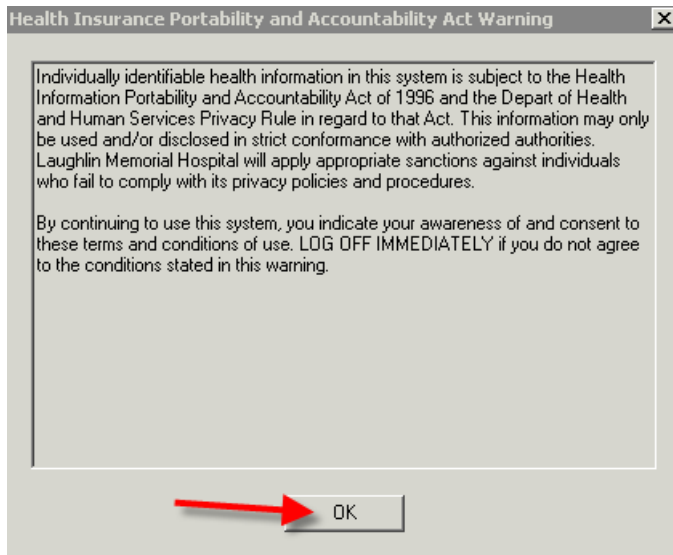
After rebooting your computer, open your web browser and go to <http://apps.lmhcare.org>. You will need to log into the website using your NETWORK username and password.



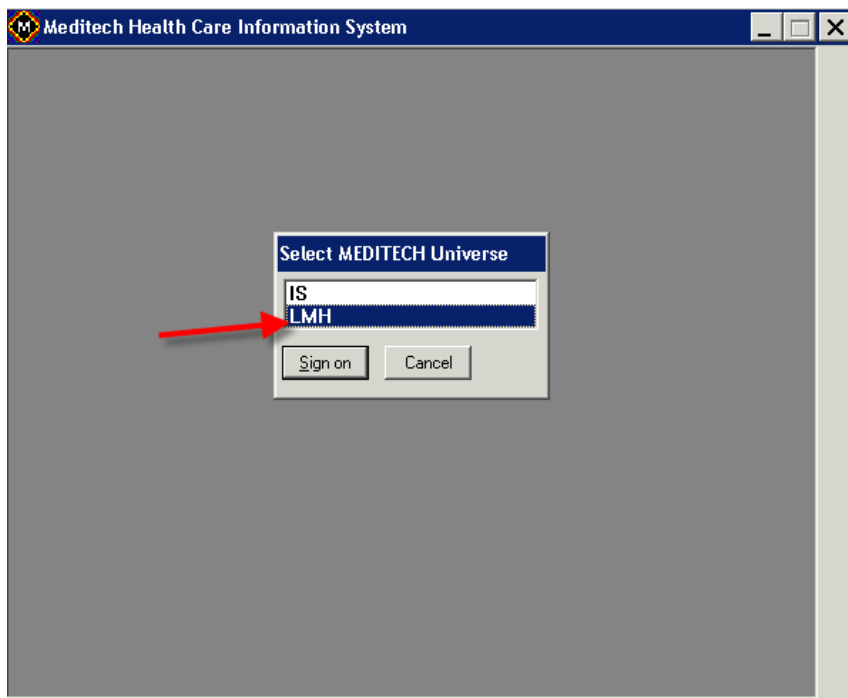
Once logged in, you will see the icons to the applications you have been granted access. To start an application, you will need to click on the icon of your choice.



Prior to the application loading, you will need to acknowledge the privacy statement by clicking OK.



Your application may take a moment to load. Once the application is loaded, you will use the assigned credentials that you were given. You will also need to choose the LMH option when using Meditech.





Note: The speed of your internet connection plays a large part on the speed of screen refreshes and such.

When you are finished and need to log off. Please close out of any application just as you would normally. After logging out of all applications, you will then need to logoff the Citrix website to completely end your connection. Logging out correctly of all applications is critical to keep from having multiples sessions open on the Citrix servers.

When finished, please remember to log out of the system by clicking the **LOG OFF** option on the webpage.



The Laughlin IT HelpDesk can be reached at 423.787.5151 if additional assistance is needed.